

Bellmouth Dimensions

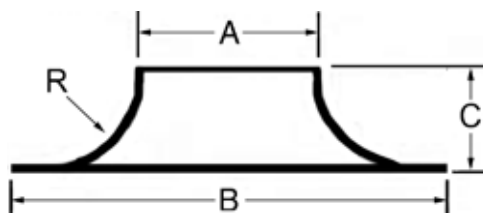
Bellmouth is the optimum flow fitting for tapping round pipe or flexhose to a flat surface. It is the proper fitting as recommended by the ACGIH, that must be used when tapping to a flat surface when space allows.

For example, you can locate a bellmouth on the under side of a table saw, then attach ducting.



Diameter "A"	Width "B"	Height "C"	Radius "R"	Wt. Lbs.
4"	9"	2-1/2"	1-1/2"	1.3
5"	10"	2-1/2"	1-1/2"	1.2
6"	12"	3"	2"	1.7
7"	13"	3"	2"	1.9
8"	14"	3"	2"	2.0
9"	15"	3"	2"	2.2
10"	16"	3"	2"	2.4
11"	19"	4"	3"	3.6
12"	22"	4"	3"	3.8
14"	22"	4"	3"	4.4
16"	26"	5"	4"	6.5

*Outside diameter is 1/16"-1/8" less than even inch.



Due to market changes and fluctuations beyond our control, specifications and pricing subject to change without notice. Buyers subject to terms and conditions of sale. Many states and localities have codes and regulations governing sales, construction, installation and or use of Products for certain purposes, which may vary from those in neighboring areas. While Air Handling Systems by Manufacturers Service Co., Inc. attempts to assure that its Products comply with such codes, it cannot guarantee compliance, and cannot be responsible for how the Product is installed or used. Before purchase and use of a Product, please review the Product application, national & local codes, regulations, and be sure that the Product, installation, and use will be in compliance. Copyright Air Handling Systems.