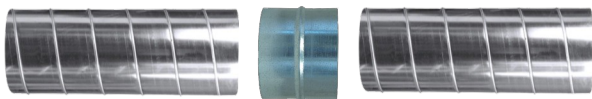




## Installation of Spiral Pipe & Fittings

1. Fittings and small-end couplings are male sized to slip inside pipe & flexhose.
2. Fitting-to-fitting connections are made by using a large-end coupling or a short length of spiral pipe.
3. Our duct work is not flared or belled on one end for the “air flow” type of joint.
4. It is recommended to pop rivet the connections and seal with silicone. Rivet size is 1/8” x 3/8” steel.

### Pipe-To-Pipe Connection



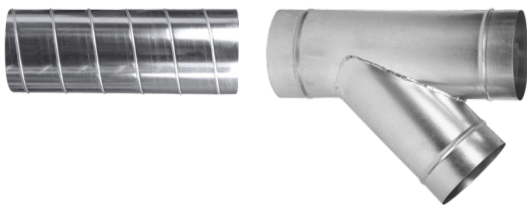
Spiral pipes are connected together by a sleeve type coupling (COUP). The coupling has a small-end (male) and is slipped into the pipe sections.

### Fitting-To-Fitting Connection



Fitting-to-fitting connections can be made by cutting a short length of spiral pipe and using this length of duct as a female coupling or by ordering a type COU2 female coupling.

### Fitting-To-Pipe Connection



All fittings are sized to slip into mating pipe sections or flexhose. No additional coupling will be needed.

Please note that due to market conditions beyond our control, both product specifications and pricing are subject to change without prior notice. All buyers are required to adhere to the terms and conditions of sale. It is important to be aware that different states and localities have their own unique codes and regulations governing the sale, construction, installation, and utilization of products for specific purposes. These regulations may vary from one region to another. Air Handling Systems by Manufacturers Service Co., Inc. cannot guarantee compliance, nor can we assume responsibility for the installation or usage of our products. We strongly urge you to thoroughly review the product's intended application, as well as both national and local codes and regulations, prior to purchase. Copyright © Air Handling Systems.