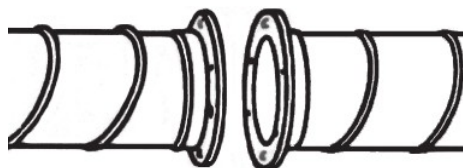
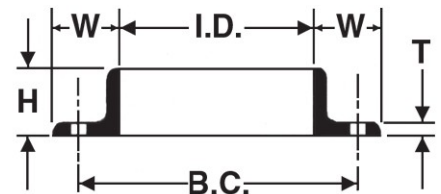
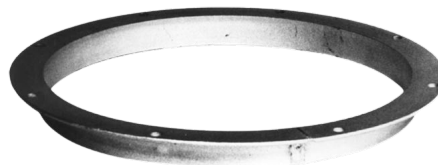


Angle Rings—Pre-punched, Carbon Steel A36

Angle Rings create an obstruction-free interior with stronger and sturdier joints (welded hot rolled steel). Used in Spray Booth Stacking, Paper Trim Collection, Bulk Material Handling, and any system that requires easy disassembly or where 18 gauge Spiral Pipe is installed. Angle Rings exposed to weather will have to be painted in the field. When installing, slip Angle Ring over spiral pipe, weld or van stone, then bolt together. **Stainless Angle Rings also available**, call for details. A36 steel can maintain its strength at temperatures ranging up to 650° F.



Angle Ring Connection



Dia.	Part No.	Height x Width x Thickness	Inside Dia. I.D.	Bolt Hole Centers	No. of Bolt Holes	Size of Bolt Holes	Weight
3"	03RING	1" x 1" x 10 Ga.	3-1/8"	4-5/16"	6	9/32"	.67
4"	04RING	1" x 1" x 10 Ga.	4-1/8"	5-5/16"	6	9/32"	.88
5"	05RING	1" x 1" x 10 Ga.	5-1/8"	6-5/16"	6	9/32"	1.13
6"	06RING	1-1/4" x 1-1/4" x 1/8"	6-1/8"	7-5/16"	6	9/32"	1.75
7"	07RING	1-1/4" x 1-1/4" x 1/8"	7-1/8"	8-1/2"	6	3/8"	2.00
8"	08RING	1-1/4" x 1-1/4" x 1/8"	8-1/8"	9-9/16"	6	3/8"	2.25
9"	09RING	1-1/4" x 1-1/4" x 1/8"	9-1/8"	10-5/8"	6	7/16"	2.50
10"	10RING	1-1/4" x 1-1/4" x 1/8"	10-1/8"	11-13/16"	6	7/16"	2.75
11"	11RING	1-1/4" x 1-1/4" x 1/8"	11-1/8"	13-3/4"	6	7/16"	3.00
12"	12RING	1-1/2" x 1-1/2" x 1/8"	12-1/8"	14"	8	7/16"	4.00
13"	13RING	1-1/2" x 1-1/2" x 1/8"	13-1/8"	15"	8	7/16"	4.25
14"	14RING	1-1/2" x 1-1/2" x 1/8"	14-1/8"	16"	8	7/16"	4.75
15"	15RING	1-1/2" x 1-1/2" x 3/16"	15-1/8"	17"	8	7/16"	7.25
16"	16RING	1-1/2" x 1-1/2" x 3/16"	16-1/8"	18"	8	7/16"	8.00
18"	18RING	1-1/2" x 1-1/2" x 3/16"	18-1/8"	20"	8	7/16"	8.50
20"	20RING	1-1/2" x 1-1/2" x 3/16"	20-1/8"	21-3/4"	12	7/16"	9.50
22"	22RING	1-1/2" x 1-1/2" x 3/16"	22-1/8"	23-3/4"	12	7/16"	10.75
24"	24RING	1-1/2" x 1-1/2" x 3/16"	24-1/8"	25-7/8"	12	7/16"	11.50
26"	26RING	2" x 2" x 3/16"	26-1/8"	28-3/8"	16	7/16"	16.50
28"	28RING	2" x 2" x 3/16"	28-1/8"	30-3/8"	16	7/16"	18.00
30"	30RING	2" x 2" x 3/16"	30-1/8"	32-3/8"	16	7/16"	19.50
32"	32RING	2" x 2" x 3/16"	32-1/8"	34-3/8"	16	7/16"	20.00
34"	34RING	2" x 2" x 3/16"	34-1/8"	36-3/8"	16	7/16"	22.00
36"	36RING	2" x 2" x 3/16"	36-1/8"	38-3/8"	16	7/16"	23.00
38"	38RING	2" x 2" x 3/16"	38-1/8"	40-3/8"	24	7/16"	24.50
40"	40RING	2" x 2" x 3/16"	40-1/8"	42-3/8"	24	7/16"	25.75
42"	42RING	2" x 2" x 3/16"	42-1/8"	44-3/8"	24	7/16"	26.50

24" Rings and larger MUST be shipped by Common Carrier.