

Air Handling Systems Newsletter

**INDUSTRIAL STRENGTH
Ductwork Direct**
DECEMBER 2012

Happy Holidays from Air Handling Systems

On behalf of all of us at Air Handling Systems, we thank you for your continued loyalty and support.

As the economy continues to be challenging, we still have much to be grateful for.

Best wishes to you and your family for every happiness this joyous holiday season and throughout the coming year.

Combustible Dust: What Woodworkers Need to Know

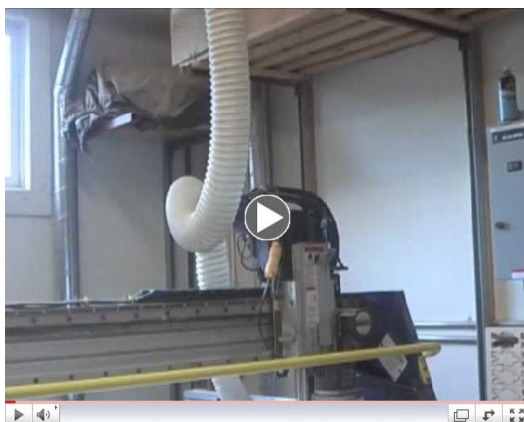


With the increase of combustible dust incidents, OSHA is visiting woodworking facilities with greater frequency.



Jamison Scott, Air Handling Systems focuses this piece specifically on the woodworking industry and what woodworkers need to know. Read more in your print copy of Wood & Wood Products or [click here](#) to read digital edition on Woodworking Network.

CNC Router Solution - Watch our Ball Joint In Action



Ball Joint In Action at Eli Whitney Museum

43% Price **REDUCTION** on Easy Connect Sleeves.

While we can't lower prices on everything we are happy to announce a price reduction on our **Easy Connect Sleeves**. Not just 5% or 10% or even 25% - an average of **43%** price reduction accomplished! [Click here](#) to order now.



Easy Connect Sleeves (ECS) are a quick connect solution and are assembled by simply tightening one bolt which will take only a few seconds.

ECS's are airtight with no protrusions into the air stream. **They are ideal for dust collection systems, which require quick disassembly and reassembly of ductwork, or when a fast labor saving installation is important.**

Sleeves have a polyethylene seal that has sufficient elasticity to accommodate the spiral duct seam. When the connector is tightened the galvanized metal sleeve contacts the duct wall to provide rigidity. No rivets, screws, or sealant are needed to assemble the Easy Connect System. Spiral pipe NOT included.

International Services, Shipping Outside Continental United States

Air Handling Systems ships products worldwide on a regular basis. Please forward your list of material and location of freight forwarder in the United States. We will quickly provide a quotation including the freight cost to US forwarder.

Click video link above to watch our Ball Joint In Action at the Eli Whitney Museum.

Swivel Ball Joint connects Spiral Pipe or Flexible hose to allow the rotation of a dust or fume hood. Ideal for **CNC Router** & other machines with traversing heads. Swivel Ball Joints with **TWO proper installation collars** - one collar to fit ductwork and a second **EXTENDED COLLAR** to connect to flexhose allowing proper and free rotation of Ball Joint.

What make Air Handling Systems the BEST Choice???

CLICK HERE here to download the most important reasons Air Handling Systems is better than ALL other competitors.




We have customers in the following Countries: Canada, Costa Rica, Ecuador, Egypt, India, Honduras, Mexico, Panama, Virgin Islands (St Thomas), West Indies (Nevis), & UAE

[Click here for more information](#)

Follow us via Social Media

Find us on Facebook 

View our profile on Linked 

Follow us on 

[Forward email](#)



This email was sent to jscott@airhand.com by jscott@airhand.com | [Update Profile/Email Address](#) | Instant removal with [SafeUnsubscribe™](#) | [Privacy Policy](#).

Air Handling Systems | 5 Lunar Dr | Woodbridge | CT | 06525