

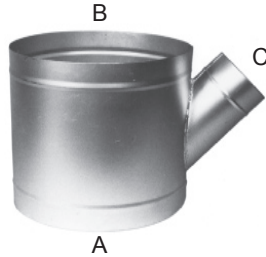


Lateral Tees and Various Fittings

45° Lateral Tees

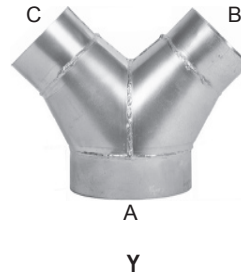


06LT06 6" on 6" 45° Lateral Tee



04LT12 4" on 12" 45° Lateral Tee

Y Branch



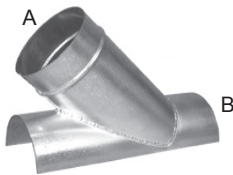
Y

45° Tee on Taper



TT

45° Lateral Saddle Tap Tee



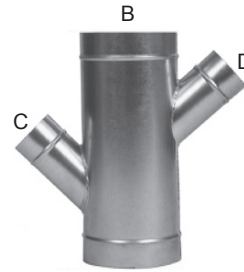
LST

Boot Tee - 90°



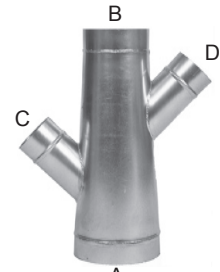
BOOT

45° Double Cross Lateral Tee



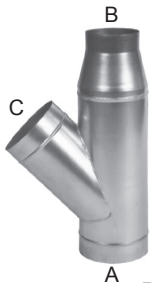
DCLT45

45° Double Cross Tee on Taper



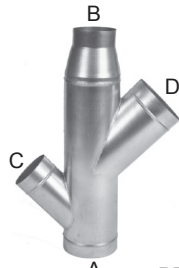
DCTTAP45

45° Reducing Lateral Tee



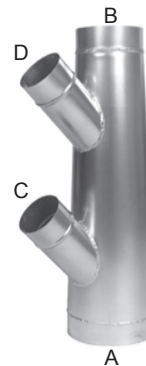
RLT45

45° Double Cross Reducing Lateral Tee



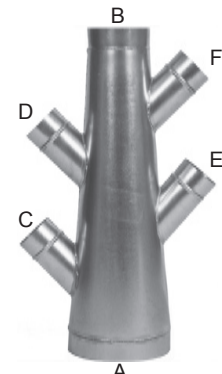
RDCLT45

45° Double Branch Tee on Taper



DBTTAP45

45° Double Cross Branch Tee on Taper



DCBTTAP45

22½°, 30°, 60° Elbow



Offset

Offset commonly used when two elbows can't make the needed connection.

